



EXAMINATIONS COUNCIL OF ESWATINI  
Eswatini General Certificate of Secondary Education

CANDIDATE  
NAME

--

CENTRE  
NUMBER

--	--	--	--	--

CANDIDATE  
NUMBER

--	--	--	--

**GEOGRAPHY**

**6890/01**

Paper 1 Geographical Themes

**October/November 2022**

**1 hour 45 minutes**

Candidates answer on the Question Paper

No Additional materials required

**READ THESE INSTRUCTIONS FIRST**

Write your name, Centre number and candidate number in the spaces provided.  
Write in dark blue or black pen.  
Do not use staples, paper clips, highlighters, glue or correction fluid.

Answer **three** questions.

Answer **one** question from each theme.

Sketch maps and diagrams should be drawn whenever they serve to illustrate an answer.

The Insert contains Photograph A for Question 1(a), Photograph B for Question 2(b),  
Photograph C for Question 3(b), Photograph D for Question 4(a) and  
Photograph E for Question 5(a).

The number of marks is given in brackets [ ] at the end of each  
question or part question.

For Examiner's Use	
1	
2	
3	
4	
5	
6	
<b>Total</b>	

This document consists of **21** printed pages and **3** blank pages.

**THEME 2: THE PHYSICAL WORLD**

Answer **one** question

**1 (a)** Study Photograph A (Insert), which shows an instrument used at a weather station.

**(i)** Name the instrument shown in Photograph A.

..... [1]

**(ii)** Identify the parts of the instrument labelled as **X** and **Y** in Photograph A.

**X** .....

**Y** ..... [2]

**(iii)** Describe how the instrument shown in Photograph A (Insert) is used in a weather station.

.....  
.....  
.....  
.....  
.....  
.....  
..... [3]

**(iv)** State **four** factors to consider when siting the instrument shown in Photograph A at a weather station.

1 .....

2 .....

3 .....

4 .....

..... [4]

(b) Study Fig. 1, which is a hygrometer used at a weather station to measure relative humidity.

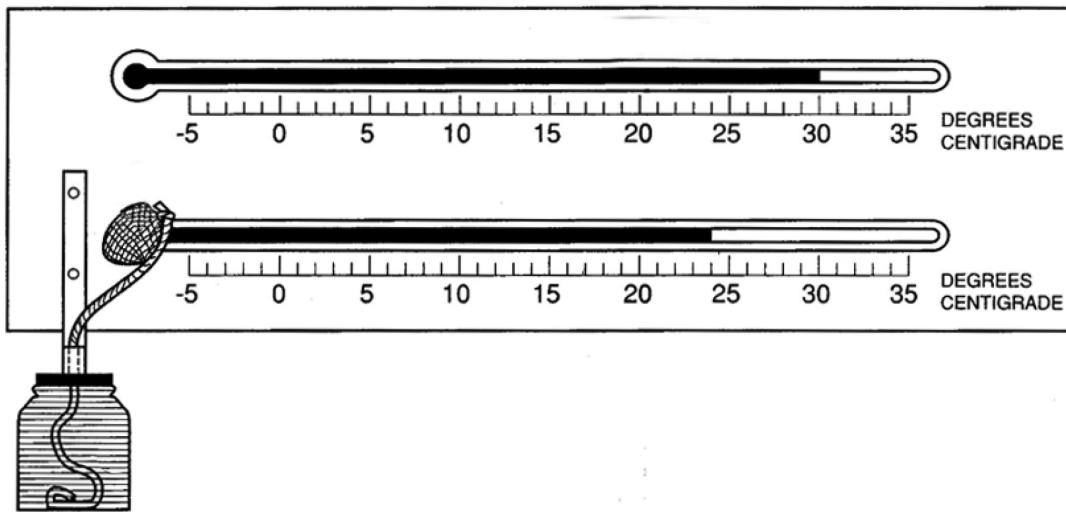


Fig. 1

(i) Describe how the instrument shown in Fig. 1 is used to measure relative humidity.

.....  
.....  
.....  
.....  
.....  
.....  
.....  
.....  
.....  
..... [4]

(ii) Explain **two** reasons why a hygrometer is kept inside a Stevenson screen.

1 .....  
.....  
.....  
.....  
.....  
.....  
.....  
.....  
.....  
..... [4]

(c) Global average temperatures vary leading to the different climatic regions.

For an area you have studied, explain **three** factors that affect the temperature of the area.

Example of area .....

1 .....

.....

.....

.....

2 .....

.....

.....

.....

3 .....

.....

.....

..... [7]

**[Total: 25 marks]**

2 (a) Study Fig. 2A and Fig. 2B which show graphs of two climatic regions.

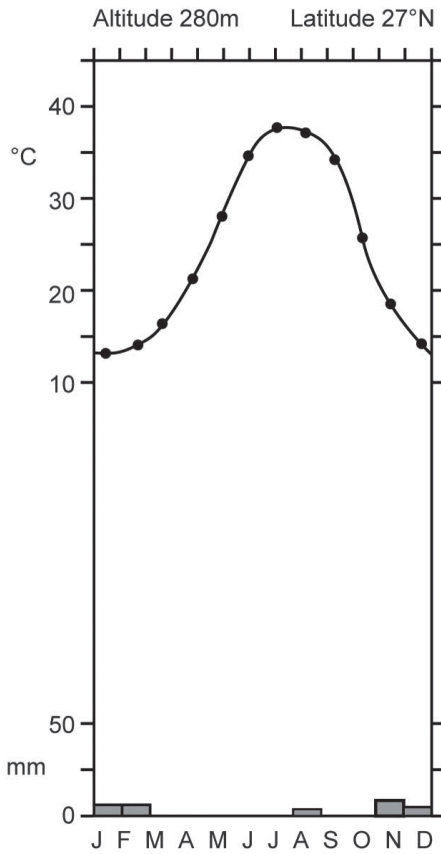


Fig. 2A

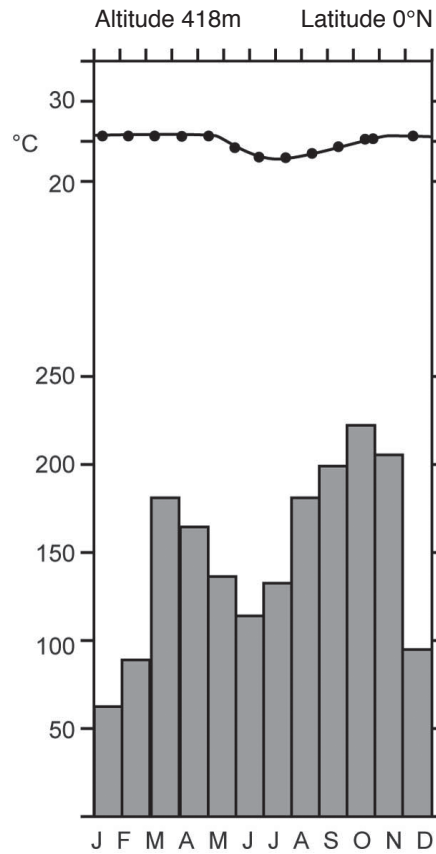


Fig. 2B

(i) Name the climatic region shown by Fig. 2A.

..... [1]

(ii) State **two** reasons for the high annual rainfall shown in Fig. 2B.

1 .....

.....

2 .....

..... [2]

(iii) Compare the temperatures shown in Fig. 2A to those in Fig. 2B.

.....  
.....  
.....  
.....  
.....  
..... [3]

(iv) Describe **four** factors that are responsible for the climate shown in Fig. 2A.

1 .....  
.....  
2 .....  
.....  
3 .....  
.....  
4 .....  
..... [4]

(b) Study Photograph B (Insert), which shows the landscape and vegetation of a climatic region.

(i) Describe **four** features of the vegetation shown in Photograph B (Insert).

1 .....  
.....  
2 .....  
.....  
3 .....  
.....  
4 .....  
..... [4]

(ii) Explain **two** human activities which take place in hot desert regions.

1 .....

.....

.....

.....

2 .....

.....

.....

..... [4]

(c) Human activities have an impact on the vegetation of an area. For an area of tropical rainforest you have studied, explain **three** ways by which human activities have affected its vegetation.

Example of area .....

1 .....

.....

.....

.....

2 .....

.....

.....

.....

3 .....

.....

.....

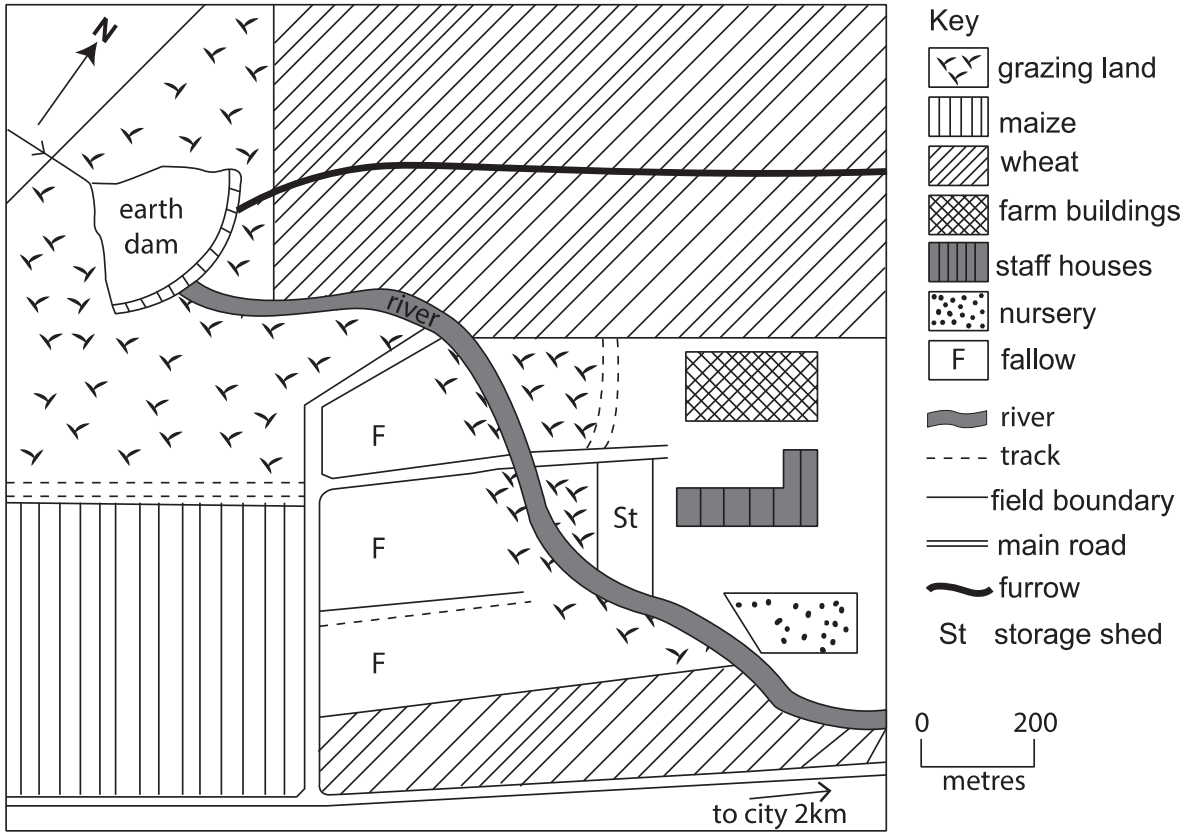
..... [7]

**[Total: 25 marks]**

**THEME 3:  
ECONOMIC DEVELOPMENT, UTILISATION AND MANAGEMENT OF RESOURCES**

Answer **one** question

3 (a) Study Fig. 3, which shows a plan of a large scale commercial farm in an LEDC.



**Fig. 3**

(i) Define *commercial farming*.

.....  
 ..... [1]

(ii) State any **two** possible impacts of the farm on the river.

1 .....  
 .....  
 2 .....  
 ..... [2]



(iii) List any other **three** inputs of a commercial farm **not** shown in Fig. 3.

1 .....

2 .....

3 ..... [3]

(iv) Describe **four** advantages of the features shown on the farm in Fig. 3.

1 .....

.....

2 .....

.....

3 .....

.....

4 .....

..... [4]

**(b)** Study Photograph C (Insert), which shows a system of farming in Eswatini.

**(i)** Identify **four** characteristics of the system of farming shown in Photograph C (Insert).

- 1 .....
- .....
- 2 .....
- .....
- 3 .....
- .....
- 4 .....
- ..... [4]

**(ii)** Explain **two** solutions by which this farming system can be made **more** productive.

- 1 .....
- .....
- .....
- .....
- .....
- .....
- 2 .....
- .....
- .....
- .....
- ..... [4]

(c) Subsistence pastoral farming has an impact on the people of an area.

For an area you have studied, explain **three** positive impacts of subsistence pastoral farming on the people.

Example of area .....

1 .....

.....

.....

.....

2 .....

.....

.....

.....

3 .....

.....

.....

..... [7]

**[Total: 25 marks]**

4 (a) Study Photograph D (Insert), which shows some aspects of sustainable tourism.

(i) What is sustainable tourism?

.....  
..... [1]

(ii) State **two** possible strategies for sustainable tourism.

1 .....  
.....  
2 .....  
..... [2]

(iii) Identify from Photograph D (Insert), **three** things which require sustainable management.

1 .....  
.....  
2 .....  
.....  
3 .....  
..... [3]

(iv) Describe **four** negative impacts of the tourism industry on the environment.

1 .....  
.....  
2 .....  
.....  
3 .....  
.....  
4 .....  
..... [4]

(b) Study Fig. 4 which shows the advantages resulting from the growth of the tourism industry in an LEDC.

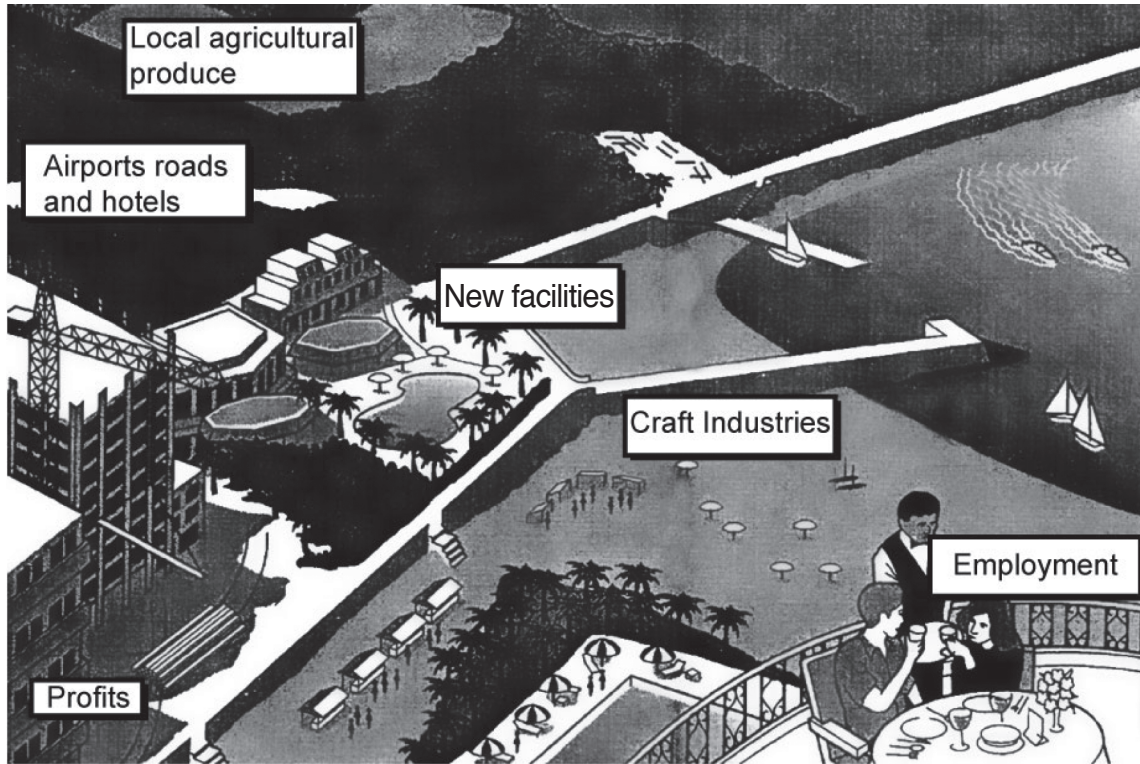


Fig. 4

(i) Using Fig. 4, describe **four** benefits that may arise from the development of the tourism industry in a country.

- 1 .....
  - 2 .....
  - 3 .....
  - 4 .....
- ..... [4]

(ii) Explain **two** strategies used by the country of Eswatini to promote tourism.

1 .....

.....

.....

.....

.....

2 .....

.....

.....

.....

..... [4]

(c) The development of the tourism industry has an impact on the people.

For an area you have studied, explain **three negative** impacts of tourism on the people.

Example of area .....

1 .....

.....

.....

.....

.....

2 .....

.....

.....

.....

.....

3 .....

.....

.....

.....

..... [7]

**[Total: 25 marks]**

**THEME 4: POPULATION AND SETTLEMENTS**

Answer **one** question

5 (a) Study Photograph E (Insert), which shows a zone located in an urban settlement.

(i) Identify this zone shown in Photograph E (Insert).

..... [1]

(ii) State **two** reasons for the development of this zone in an urban settlement.

1 .....

.....

2 .....

..... [2]

(iii) Describe **three** features of the zone shown in Photograph E (Insert).

1 .....

.....

2 .....

.....

3 .....

..... [3]

(iv) Describe **four** problems experienced by people who live in urban settlements.

1 .....

.....

2 .....

.....

3 .....

.....

4 .....

..... [4]

(b) Study Fig. 5, which shows a map of a developing town in Eswatini.

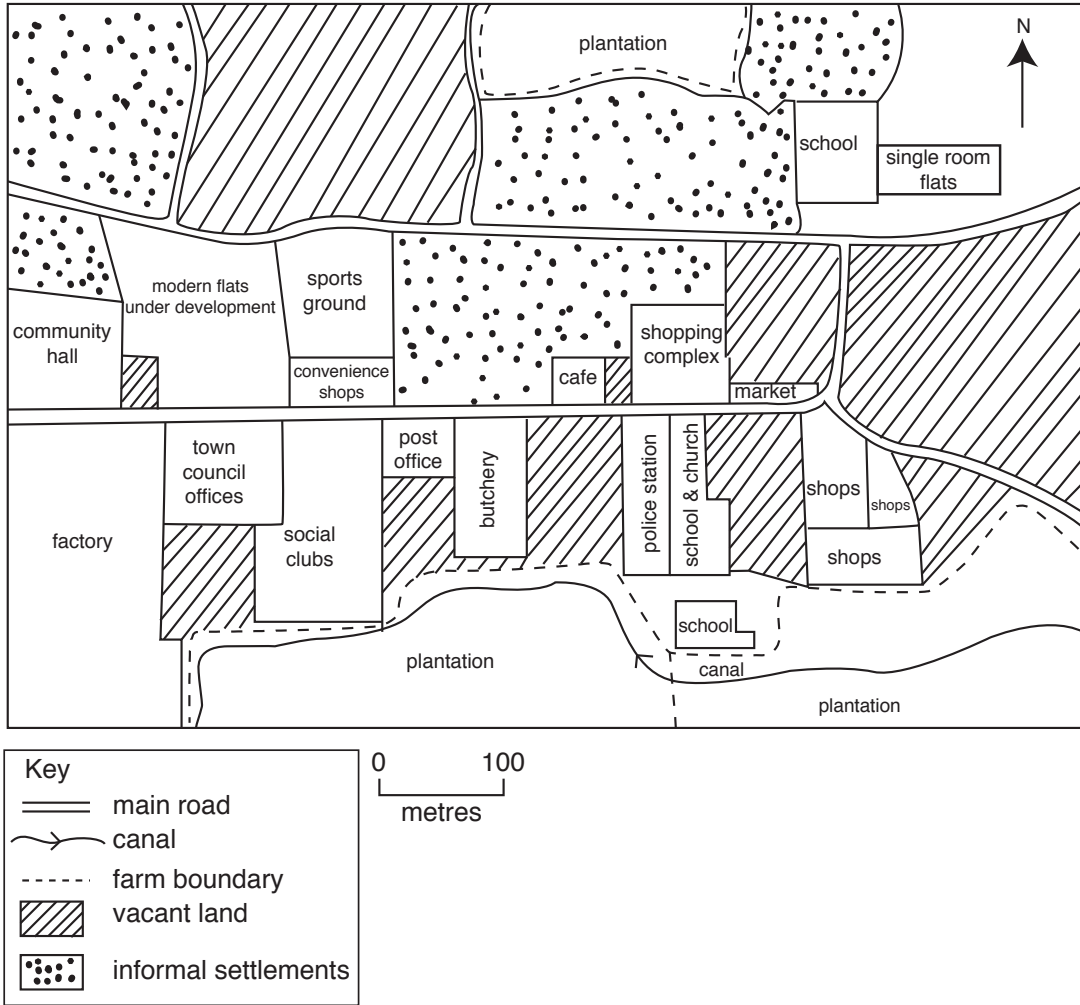


Fig. 5

(i) Identify **four** services provided in the town shown in Fig. 5.

- 1 .....
- .....
- 2 .....
- .....
- 3 .....
- .....
- 4 .....
- ..... [4]



(ii) Explain **two** possible future changes to the present land use shown in Fig. 5 as the town develops.

1 .....

.....

.....

2 .....

.....

.....

..... [4]

(c) The development of cities may lead to urban sprawl. For an area you have studied, explain **three** impacts of urban sprawl on surrounding areas.

Example of area .....

1 .....

.....

.....

2 .....

.....

.....

.....

3 .....

.....

.....

..... [7]

**[Total: 25 marks]**

- 6 (a) Study Fig. 6, which is a poster about HIV and AIDS produced by the government of Eswatini.

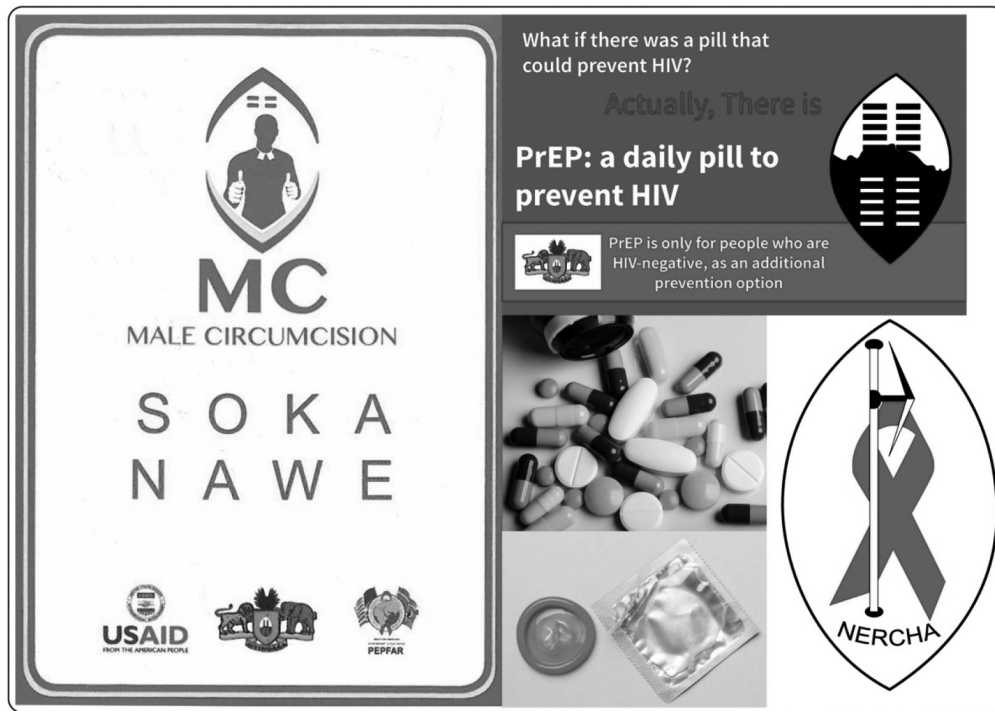


Fig. 6

- (i) What does AIDS stand for?

.....  
 ..... [1]

- (ii) List any **two** modes of HIV transmission.

1 .....

2 .....

..... [2]

- (iii) Suggest **three** reasons for the rapid spread of HIV and AIDS in LEDCs.

1 .....

2 .....

3 .....

..... [3]

(iv) Using Fig. 6, state **four** efforts being done by the country to address the impact of HIV and AIDS.

1 .....

.....

2 .....

.....

3 .....

.....

4 .....

..... [4]

(b) Study Fig. 7, which shows changes in the population of MEDCs and LEDCs.

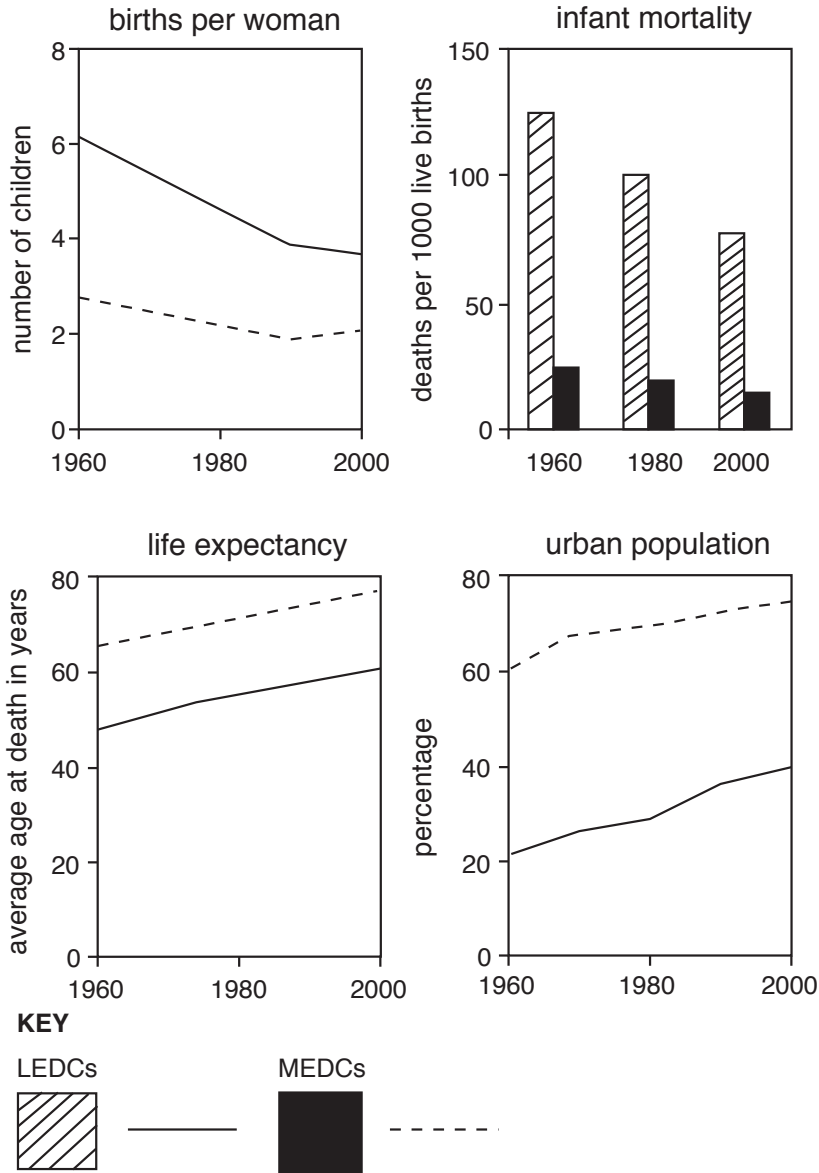


Fig. 7

(i) Describe **four** changes in the population of LEDCs shown in Fig. 7.

- 1 .....
  - 2 .....
  - 3 .....
  - 4 .....
- [4]

(ii) Explain **two** reasons for the high life expectancy in MEDCs.

1 .....

.....

.....

.....

2 .....

.....

.....

..... [4]

(c) The distribution of population in the world varies from place to place. For an area you have studied, explain **three** reasons why there is a high population density.

Example of area .....

1 .....

.....

.....

.....

2 .....

.....

.....

.....

3 .....

.....

.....

..... [7]

**[Total: 25 marks]**





